

2^F



Hörmann Steel Fire-rated Doors

In accordance with GB 12955 - 2008

HÖRMANN



Contents

Hörmann steel fire-rated doors · in accordance with GB 12955 - 2008

Hörmann steel fire-rated doors	4
Steel fire-rated door HC 90 (certified in 90 min. fire resistance and heat insulation)	6
Steel fire-rated door HC 60 (certified in 60 min. fire resistance and heat insulation)	8
Steel fire-rated door HC 30 (certified in 30 min. fire resistance and heat insulation)	10
Hardware and optional parts	12
Colors and surfaces	14

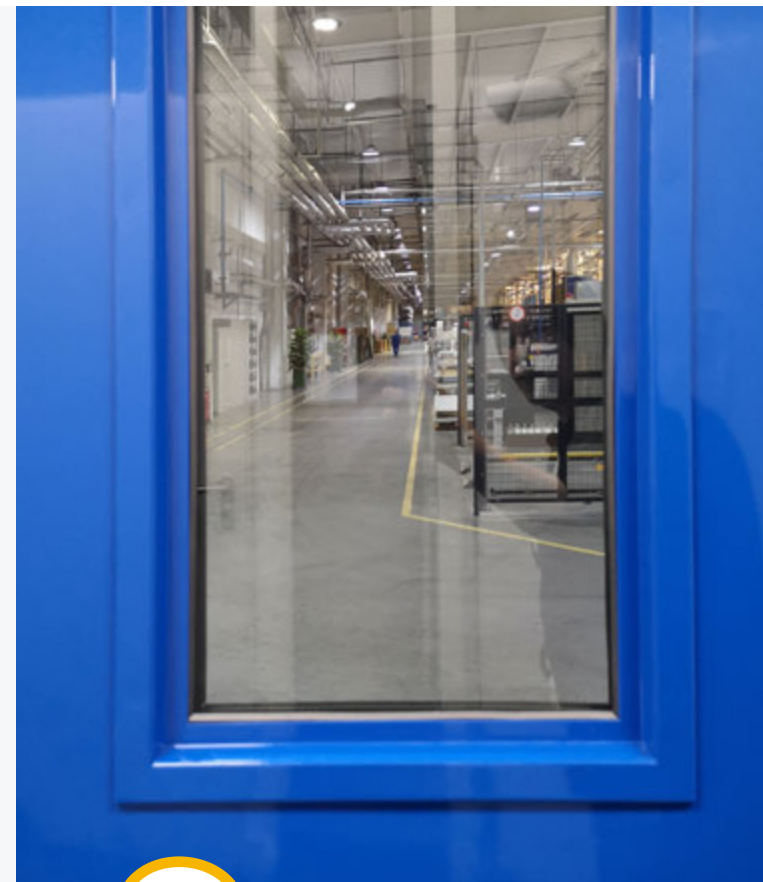
Some of the doors shown are equipped with optional parts and do not always correspond to the standard models.
 The surface finishes and colours shown are subject to the limitations of the printing process and cannot be regarded as binding. All colours are based on RAL.
 Hörmann preserve the rights for any content change. Without prior permission, no content or information is allowed to reproduce, copy and distribute.



Normal-open fire-rated doors along corridor

German quality

Fully upgraded products



1

Automatic production line

2

Inherited product quality

3

New generation composite tempered fireproof glass

4

Patented coupling design on door leaves

High-precision automatic equipment is the guarantee of product quality. Hörmann fire-rated doors are produced by high-tech automatic production lines controlled by SAP management system; with the approach, the parameter standardization and digital management of the production from order input to finished product is realized. This ensures the premium quality and consistent performance of Hörmann products.

Hörmann has an 80-year history of producing fire-rated door since it first came out of Hörmann Germany in the 1940s; Hörmann China started fire door production with German-imported production line and technology from 1998, all fire-rated doors are certified in accordance with Chinese national standard GB 12955 - 2008. The design, production and after-sales service of Hörmann fire-rated doors are all strictly adhering to the requirement of ISO 9001 quality management system and provide you full confidence on safety assurance.



Hörmann fireproof glass is produced by Germany-imported automatic production line. It possesses excellent stability and durability thanks to the composite of transparent tempered glass and nanoscale inorganic silicon refractory.

- * Based on German technology, it demonstrates stable and reliable fire protection performance;
- * With impact-resistant tempered glass, the new fireproof glass provides better vision and more durable service life;
- * Nanoscale refractory provides good fire and UV resistance properties; with the high light transmittance rate up to 86%, it has less risk of blistering and discoloration after long time use.

Patented safety mushroom pins are applied for Hörmann double leaf fire-rated doors. During door closing, the mushroom pins on the active leaf would slide into the corresponding grooves of passive leaf, then, the two door leaves are closely coupled, effectively preventing the deformation of door leaf caused by fire and high temperature; during door opening, the mushroom pins would slide out of the grooves naturally without any impact to door opening. Hörmann fire doors provide a precious life-saving time for people evacuation in case of a fire emergency.



Steel fire-rated door HC 90

Certified in 90 min. fire resistance and heat insulation



Coupling design



Environment-friendly materials



All-around smoke protection



Durable hardware



Door leaf thickness
62 mm



All Hörmann steel fire-rated doors meet CCC authentication.



Fire-rated
Class A



HC 90 - 1



HC 90 - 2

Standard Configuration

Fire resistance and heat insulation time in hours	1.5
Leaf thickness	62 mm
Leaf steel panel thickness	0.8 mm
Frame steel panel thickness	1.5 mm
Frame depth	114 mm
Infill	90 min. fireproof board
Lock	Fireproof lock
Handle set	SUS lever / lever handle set D - 110 in short plate
Hinge	SUS fireproof hinge
Frame connection	90°

Mushroom pin

Single leaf door	-	-	-
Double leaf door	H < 1800 mm	1800 ≤ H < 2300 mm	2300 ≤ H ≤ 2500 mm
	-	2 pcs.	3 pcs.

Tempered composite fireproof glazing

Thickness of fireproof glazing	30 mm
Max. area	15% of the door area
Max. width	≤ 280 mm
Max. height	≤ 1000 mm

Structural opening size limitation

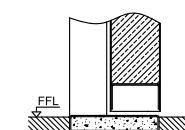
	Width limitation	Height limitation
Single leaf door	1300 mm	2500 mm
Double leaf door	2500 mm	2500 mm

Other configuration

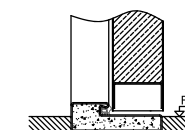
Hardware and optional parts Page 12 - 13
Surfaces Page 14 - 15

Threshold:

Two versions of thresholds can be delivered on request.



Flat threshold



Threshold with seal

Steel fire-rated door HC 60

Certified in 60 min. fire resistance and heat insulation



Door leaf thickness
62 mm



All Hörmann steel
fire-rated doors meet
CCC authentication.



T60 Fire-rated
Class B



HC 60 - 1



HC 60 - 2

Standard Configuration

Fire resistance and heat insulation time in hours	1.0
Leaf thickness	62 mm
Leaf steel panel thickness	0.8 mm
Frame steel panel thickness	1.5 mm
Frame depth	114 mm
Infill	60 min. fireproof board
Lock	Fireproof lock
Handle set	SUS lever / lever handle set D - 110 in short plate
Hinge	SUS fireproof hinge
Frame connection	90°

Mushroom pin

Single leaf door	-	-
Double leaf door	H < 2300 mm	2300 ≤ H ≤ 2500 mm 3 pcs.

Tempered composite fireproof glazing

Thickness of fireproof glazing	20 mm
Max. area	15% of the door area
Max. width	≤ 280 mm
Max. height	≤ 1000 mm

Structural opening size limitation

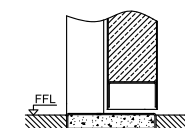
	Width limitation	Height limitation
Single leaf door	1300 mm	2500 mm
Double leaf door	2500 mm	2500 mm

Other configuration

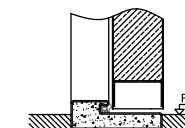
Hardware and
optional parts Page 12 - 13
Surfaces Page 14 - 15

Threshold:

Two versions of thresholds can be delivered on request.



Flat threshold



Threshold with seal

Steel fire-rated door HC 30

Certified in 30 min. fire resistance and heat insulation



Door leaf thickness
52 mm



All Hörmann steel
fire-rated doors meet
CCC authentication.



Fire-rated
Class C



HC 30 - 1



HC 30 - 2

Standard configuration

Fire resistance and heat insulation time in hours	0.5
Leaf thickness	52 mm
Leaf steel panel thickness	0.8 mm
Frame steel panel thickness	1.5 mm
Frame depth	100 mm
Infill	30 min. fireproof board
Lock	Fireproof lock
Handle set	SUS lever / lever handle set D - 110 in short plate
Hinge	SUS fireproof hinge
Frame connection	90°

Mushroom pin

Single leaf door	-	-
Double leaf door	-	-

Tempered composite fireproof glazing

Thickness of fireproof glazing	20 mm
Max. area	15% of the door area
Max. width	≤ 280 mm
Max. height	≤ 1000 mm

Structural opening size limitation

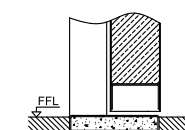
	Width limitation	Height limitation
Single leaf door	1100 mm	2300 mm
Double leaf door	2100 mm	2300 mm

Other configuration

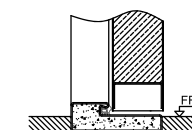
Hardware and
optional parts Page 12 - 13
Surfaces Page 14 - 15

Threshold:

Two versions of thresholds can be delivered on request.



Flat threshold



Threshold with seal

Fireproof hardware

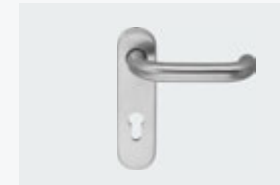


Reliable hardware is the guarantee of life safety

Fire door is an important facility to provide free passage and safe evacuation exit in case of fire; reliable hardware is the key component for fire door and plays an important role at critical moment. Hörmann provides a variety of high quality fireproof hardware to protect your safety alongside the fire alarm system and emergency escape system.

SUS handle set and knob

Safe and long service life guarantee



Lever / lever handle set
D - 110 in short plate / rose



Lever / lever handle set
D - 310 in short plate / rose



Lever / lever handle set
D - 410 in rose



Lever / knob handle set
D - 110 / K - 130 in short plate / rose
D - 310 / K - 130 in short plate / rose
D - 410 / K - 130 in rose

Door closer and selector

Safe and correct door closing after passing is an important prerequisite of fire protection during critical moment



Door closer with arm



Door closer with sliding rail



Door selector

Anti-panic bar

Press the bar to quickly open the locked door and escape



Function D: with lever handle set on outdoor side, applied for doors of public passage way
Function E: with knob on outdoor side, applied for doors with access control

SUS hinge

With reinforced design and stainless steel laser welding process



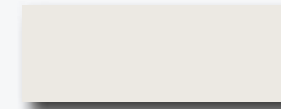
Integrated maintenance-free ball bearing technology
Load bearing capacity meets the requirements of EN 1925, grade 14 (the highest level)

Full range of colors and surfaces for your choice



Powder coating surface

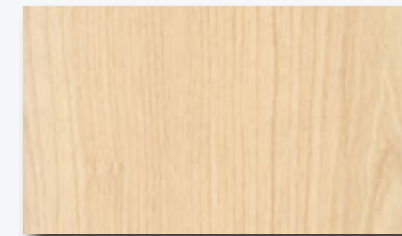
The smooth appearance of coating provided by the advanced powder coating line gives the steel doors a superb appearance. We offer a wide spectrum of colors to suit diverse tastes.



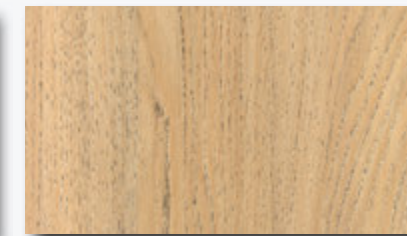
Standard color RAL 9002

Decograin surface

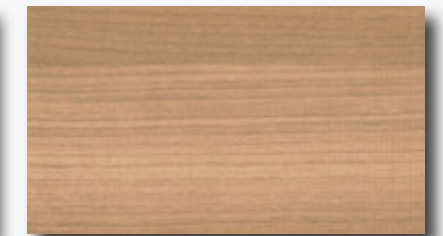
Our fine Decograin film is tightly attached to the galvanized steel sheet of door leaf through an advanced heat-pressing procedure. The foil-coated timber designs, with UV resistance and good durability, not only boast a natural-looking appearance, but are also easy to maintain.



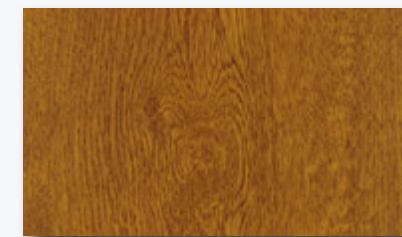
Granada Maple



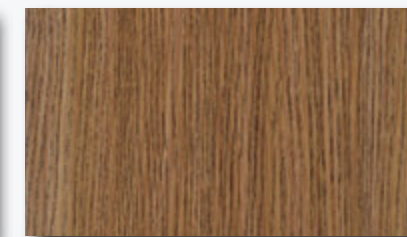
Kings Oak



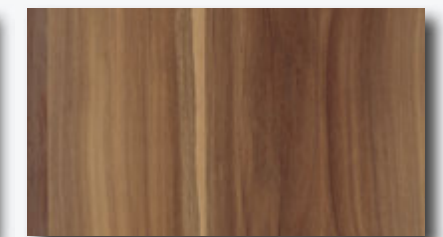
Malaga Cherry



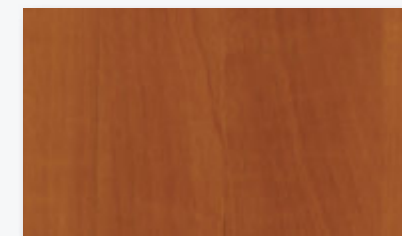
Golden Oak



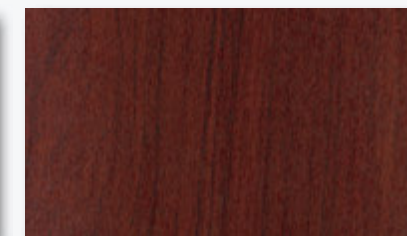
Hungary Ash Cognac



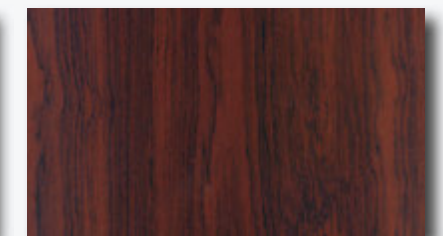
Wallis Plum Natural



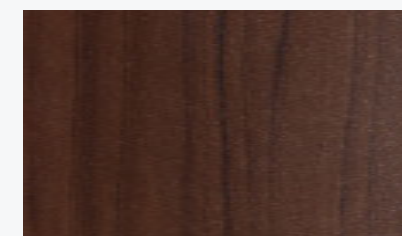
Meran Apple



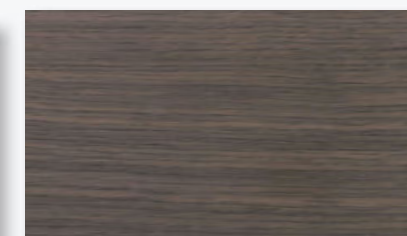
Mahogany



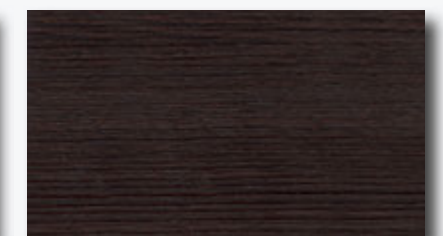
Dark Mahogany



Dark Sandalwood



Horizontal Gray Oak



Horizontal Dark Oak

Colors and surface finishes illustrated above are subject to the limitations of the printing process.

Hörmann: Quality without Compromise



Hörmann KG Amshausen, Germany



Hörmann KG Antriebstechnik, Germany



Hörmann KG Brandis, Germany



Hörmann KG Brockhagen, Germany



Hörmann KG Dissen, Germany



Hörmann KG Eckelhausen, Germany



Hörmann KG Freisen, Germany



Hörmann KG Ichtershhausen, Germany



Hörmann Alkmaar B.V., Netherlands



Hörmann Legnica Sp. z o.o., Poland



Hörmann LLC, Montgomery IL, USA



Hörmann Flexon LLC, Burgettstown PA, USA



Hörmann Beijing, China



Hörmann Tianjin, China



Hörmann Changshu, China



Shakti Hörmann Ltd. India

Hörmann is a professional manufacturer worldwide that offers you a complete range of major building products from one source. We manufacture in specialized factories using the advanced production technologies. The comprehensive manufacturing, sales and service network in Europe, Asia and America makes Hörmann your strong international partner for the high-quality construction. "Quality without Compromise".

GARAGE DOORS
OPERATORS
HINGED DOORS
PARTITION WALLS
INDUSTRIAL DOORS
LOADING TECHNOLOGY

All information and images are protected by copyright. No part of this brochure may be reproduced without our permission. Subject to changes.

Print: 04, 2022 (Issue: 04, 2022) 1121120262
Some of the doors shown in this brochure have special features and therefore do not always represent the standard version.

www.hoermann.cn

HÖRMANN